

The Ro/Ro Hygienic Acoustic Baffle System

A special system of cleanable, ceiling-mounted, retractable acoustic baffles, ideal for controlling noise and reducing reverberation in food production/processing and pharmaceutical facilities and other hygiene-sensitive areas



- Proven and Effective Sound Absorption
- Suitable for Wet and Dry Cleaning
- Bacteria-Resistant Finish
- Robust, Stainless Steel Construction
- Rapidly Installed and Fully Demountable

Ideal for:

- Self-standing design which saves installation time
- Wind and seismic withstand calculation
- Complete supply includes the stack above the silencer
- Optional duct works between engine and stack

The IAC Ro/Ro Acoustic Baffle System has been specially designed to combat noise and reverberation problems inside buildings while being simple and quick to clean and maintain. Already highly popular in northern Europe, the system consists of demountable, sound absorbing, stainless steel framed panels (baffles), suspended from ceiling-mounted rails. The panels are arranged in rows with interconnecting wires which allow them to be installed/collected at one end for fast routine inspection and maintenance. All panels can be easily and swiftly removed (unclipped) from the mounting system for thorough cleaning elsewhere.

The standard size of the panels is 1200mm x 600mm x 80mm thick and two different non-porous finishes are available, each being suited to a particular cleaning method.

Please see overleaf for full product description and specification.

Any production environment where reverberation control and hygiene are of critical importance



Specification for the IAC R0/R0 System

Panel construction, size and weight

Sound-absorbing Ro/Ro baffles are 1200mm long x 600mm wide x 80mm thick. Special (non-standard) panels can be made on request. Each baffle consists of a stainless steel frame inside which is a rigid, self-supporting mineral wool panel. Modules weigh between 6.5 and 8.5 kilograms, depending on the type of mineral wool panel used (see Panel Types).

Panel types

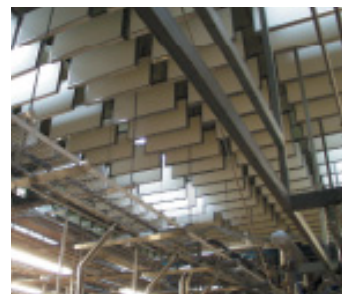
Type LP: Offers maximum sound absorption and is suitable for dry and "semiwet" cleaning. Ideal for applications with low-to-moderate contamination levels, e.g. dairies, pharmaceutical plants etc.

Type CF: Offers a renewable plastic foil surface with good sound absorption for wet and dry cleaning. Suitable for moderate-to-high contamination levels, e.g. slaughter houses. Withstands daily wet cleaning. Plastic foil surface can be renewed at appropriate intervals.

Acoustic performance

Type	Frequency (Hz)	125	250	500	1000	2000	4000
LP	Sabins/baffle	0.25	0.53	0.85	0.95	0.95	0.89
CF	Sabins/baffle	0.20	0.51	0.81	0.80	0.80	0.70

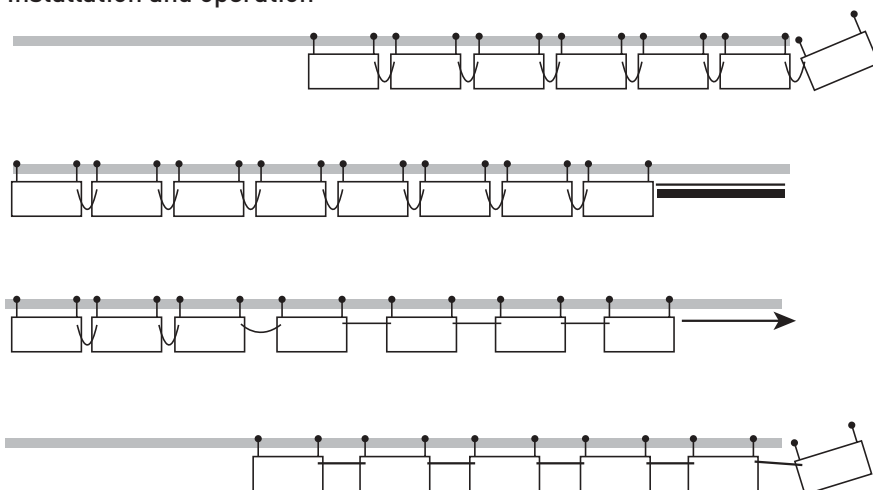
- The values quoted above are for a typical installation (with 900mm spaces between rows) and a full evaluation of site conditions must be carried out.
- Please refer to IAC for product selection.



Example of acoustic performance achieved:

A factory with a reflected ceiling area of 700m² had its *reverberent field* reduced by 6dB at 1000Hz using the unique IAC Ro-Ro Acoustic Baffle system.

Installation and operation



1. Baffles are mounted on a stainless steel rail and joined together using connecting wires.
2. Baffles are pushed to the far end of the rail.
3. Baffles are pulled along the full length of the rail until all connecting wires are taut.
4. Baffles can be removed, one by one, by 'unclipping' connecting wires.